

Hydraulic-driven Track Mobile Plant

Performance Features

- Conmins Diesel Engine of high performance makes this track mobile plant cost less oil, produce less noise and have a more reliable performce and provide an economical and environmental power. The engine can be additionally equipped with low temperature preheating start-up device to ensure the machine easy to start under the condition of minus 25 temperature.
- Employing fully rigid boat structure, the chassis features high strength, low contact pressure, good passing ability(easy transpotation) and good adaptability to hilly and marsh areas.
- High pulling forque travel motor with mature techniques offers strong driving force and high reliability. The use of all-walt variable hydraulic technique in the travel system ensures high performance, reliability and utilization of the motor. The main hydraulic devices like pump, valve are imported from Japan.
- Operating system with imported direct servo technique can be easily and precisely controlled and tavel in a infinite variable speed.
- Crushing and screening equipments are of our company's advanced products, which have compact conformation and stable performance. The screen equipment set by 20 degree obliquity improves the screening ability.

Advantages of Hydraulic-driven Track Mobile Plant

- **Elegant Design:**Hydraulic-Driven Track Mobile Plant, compact conformation, elegant design; light weight, low transportation cost.
- **Space Expanding:**Sufficent space on the truck leaves room for installation of the second conveyor belt. This makes easy adding a new belt conveyor without changing the main structure and thus can achieve the output of three materials. Feeding hopper set up in the front of the truck, ensures ample feeding.
- **Function Extending:**A siffer is installed on the top of the feeding hopper so that materials of small size can drop through to be carried away by the belt.

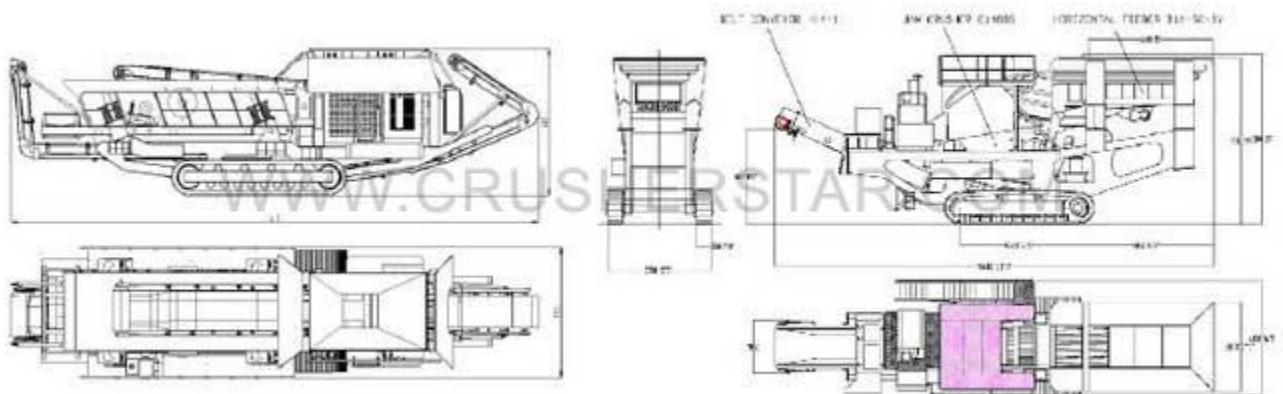
Technical Parameter

	Title	Unit	Model		
			Y2S1848L	YGE69L	Y2S184F00
	Track Broad Width	mm	2990	2990	2990
Dimensions	Track Length	mm	4250	4250	4250
	Track Gauge	mm	2390	2390	2390

Mobile Crusher more information at <http://www.rockscrusher.com>

Track Width	mm	600	600	600
Transport Length	mm	12500	13000	12000
Transport Width	mm	3150	3150	3150
Transport Height	mm	3500	3500	3600
Operating Length	mm	15800	15200	13800
Operating Width	mm	3150	3150	2900
Operating Height	mm	4200	4900	4100
Minimum Ground Clearance	mm	320	320	320
Pressure Flow	Mpa/LPM	28/180	28/180	28/180
Max. Speed	km/h	1.39	1.39	1.39
Performance Climbing Grade	%	30	30	30
Engine Power	kw	92	150	150
Engine Speed	kw	2100	2100	2100

Auxiliary introduction and graphic illustration
Main Features of the Y2S1848L



- Compact conformation, elegant design; light weight , low transportation cost. See fig.
- Sufficient space on the truck leaves room for installation of the second conveyor belt. This makes easy adding a new belt conveyor without changing the main structure and

Mobile Crusher more information at <http://www.rockscrusher.com>

thus can achieve the output of three materials. See fig 2.

c. Feeding hopper, set up in the front of the truck, ensures ample feeding.

d. A sifter is installed on the top of the feeding hopper so that materials of small size can drop through to be carried away by the belt.

e. The plant can be put into operation 20 minutes after arriving at the site. It can be transported easily on a truck without lifting equipment so that damage caused by transportation can be reduced to the minimum.